

PROTECT AGAINST NETWORK DOWNTIME, CONTROL ACCESS TO CRITICAL RESOURCES AND ENSURE BUSINESS CONTINUITY



Opengear is a leading provider of enterprise grade console servers, cellular routers and remote management solutions that enable our customers to easily tame IT complexity. Our commitment to simplify remote management enables our products to deliver what IT professionals really need and want with unquestionable security and value.

Opengear's extensive support for out-of-band management ensures our customers have secure Verizon wireless powered remote access and control even when the primary network link is down. The result is a drastic reduction in the need for expensive on-site technical staff, on-site visits and rapid problem resolution.

We offer a broad variety of solutions that utilize the secure cellular connectivity on the Verizon network to meet the most exacting demands.

Serial console server

Connect management consoles

- Up to 48 RS-232 serial ports
- SSH into server, router, switch & firewall consoles
- Cluster hundreds of serial ports behind one network address
- Hard power cycle equipment right from the serial console shell
- AJAX web terminal emulator for clientless console access

Built-in out-of-band

Remote access & recovery during outages

- Internal 3G CDMA, PSTN dial-in modem, or broadband Ethernet
- High availability with redundant network connection
- Automatic failover when primary link goes down
- NTP Server with GPS for Stratum -1time server

Power monitoring & control

Consolidate & automate power distribution

- Manage USB, serial and network connected UPSes & PDUs
- Vendor neutral, built-in support for over 100 manufacturers
- Unified portal for browser & CLI control of heterogenous PDUs
- Shed load when line power drops, graceful shutdown of critical systems when back up power runs down to low

Management LAN

Isolate & secure lights-out management

- Dedicated Ethernet or VLAN switch firewall's service processor, firewall management port, power and other sensitive devices
- Control access to BIOS level server vKVM, power control and diagnostics using HP iLO, Dell DRAC, IBM RSA, IMM & Sun ALOM
- BMC IPMI and Serial-over-LAN tunneling

Cisco equipment

Get pro-active about network downtime

- Access to Cisco console ports during network outages
- Back up and restore IOS running config or system image to integrated TFTP server and USB storage
- Detect and respond to problems before they cause outages
- Serial pinout Cisco rolled or Cisco straight compatible

Log, alert & automate

Monitor all managed sites

- Capture all serial and network management traffic in audit trail logs
- Trigger SMS, email alerts or auto-remediation scripts on serial data pattern match, environmental threshold, cable unplugged & more
- Ensure QoS with escalating notifications during protracted outages
- Smart monitoring logic reduces the cost and incidence of false alarms

Enterprise-grade security

Compliant with the strictest requirements

- Default-deny SSH bastion
- Granular, role-based user permissions
- IPsec and OpenVPN, PKI VPN over primary or out-of-band
- FIPS 140-2 OpenSSL module, certified for use in US Government
- Two-factor authentication using RSA SecurID
- RADIUS, TACACS+, Kerberos, Active Directory remote authentication

Network monitoring integration

Extend & enhance your existing system

- Extend the reach of Solarwinds, Zenoss, Nagios and more to serial-connected devices
- Point-and-click problem remediation from the NMS UI
- Turn-key central monitoring of thousands of Opengear and managed devices with VCMS software appliance
- Upstream Nagios and SNMP server alerts

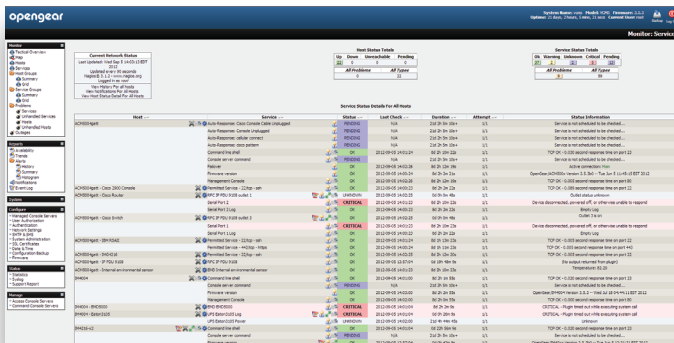


Technical Specifications

	IM4200-GV Infrastructure manager	ACM5004-GV Remote infrastructure manager	ACM5504-5-GV Remote infrastructure manager
Connectors	8, 16, 32 or 48 RJ-45 RS-232 serial (50 to 230400 bps) 1 DB-9 RS-232 local console & modem serial (2400 to 115200 bps) Internal Verizon CDMA cellular modem 2 or 3 RJ-45 10/100Base-T Ethernet 3 USB 2.0	2, 3 or 4 RJ-45 RS-232 serial (50 to 230400 bps) Optional RS-422/RS-485 Internal Verizon CDMA cellular modem Optional 4 TTL digital IO 1 or 2 RJ-45 10/100Base-T Ethernet 1 or 2 USB 2.0	4 RJ-45 RS-232 serial (50 to 230400 bps) Optional RS-422/RS-485 Internal Verizon CDMA cellular modem Optional Wifi AP, 802.11 B, G, N Optional 4 TTL digital IO 6 10/100Base-T Ethernet 2 USB 2.0
Power	Internal dual socket universal 100-240V AC or Internal dual +/- 36V to 72V DC Power consumption less than 30W	External 12V DC adapter 100-240V AC or External +/- 36V to 72V to 12V converter Power consumption less than 6W	External 12V DC adapter 100-240V AC or External +/- 36V to 72V to 12V converter Power consumption less than 6W
Dimensions	44 x 21 x 4.5cm, 5.4kg 1RU with rack mounts	10.2 x 8.8 x 2.85cm, 0.9kg Zero U with optional rack mount ears	10.2 x 16.6 x 2.85cm, 1.8kg Zero U with optional rack mount ears
Environmental	Ambient operating, non-operating: 5°C to 50°C, -30°C to +60°C Humidity: 5% to 90%	Ambient operating, non-operating: 5°C to 50°C, -30°C to +60°C Optional -35°C to 74°C, -40°C to +85°C Humidity: 5% to 90%	Ambient operating, non-operating: 5°C to 50°C, -30°C to +60°C Optional -35°C to 74°C, -40°C to +85°C Humidity: 5% to 90%
Regulatory	FCC Part 15 A, UL 1950, CE (EN55022 A, EN55024, EN60950) TUV, C-Tick, RoHS compliant, PTCRB, FIPS 140-2	FCC Part 15 A, UL 1950, CE (EN55022 A, EN55024, EN60950) TUV, C-Tick, RoHS compliant, PTCRB, FIPS 140-2	FCC Part 15 A, UL 1950, CE (EN55022 A, EN55024, EN60950) TUV, C-Tick, RoHS compliant, PTCRB, FIPS 140-2
MTBF	150 000 hours	100 000 hours	100 000 hours
CPU	166MHz ARM, Micrel KS8695P	250MHz ARM, Micrel KSZ8692	250MHz ARM, Micrel KSZ8692
Memory	64MB SDRAM 16MB embedded flash 16GB internal USB flash	32MB SDRAM 16MB embedded flash Optional 4GB internal USB flash	64MB SDRAM 16MB embedded flash 4GB internal USB flash
Operating System	Linux with source code access & custom development kit	Linux with source code access & custom development kit	Linux with source code access & custom development kit



Centralized Monitoring and Management



VCMs Virtual Central Management System

- Single window into all managed infrastructure
- Seamless in- and out-of-band access
- Available as VCMs virtual appliance for VMware, Xen and Linux KVM
- Manage 100s of Opengear & attached devices
- No per-site or per-device licence fees
- Embedded Nagios monitoring and alerts
- Aggregated environmental monitoring
- Batch distributed commands
- Firewall friendly, all monitoring tunneled over SSH
- Integrated SDT Connector SSH tunnel client for point & click access
- Simple deployment, minimal configuration

USA Head Office
630 West 9560 South Suite A
Sandy, UT 84070
+1 888 346 6853 (Sales)
+1 801 282 1387 (Support)
+1 801 606 2798 (Fax)
sales@opengear.com

