

Opengear console servers provide world class innovation for Power Management

Traditional console servers provide in band and out of band access to IT equipment such as servers, routers, switches, firewalls, and VOIP. Opengear console servers have evolved far beyond traditional to provide a best of breed power management solution with leading edge technology in infrastructure management.

Systems administrators now have one window to manage all their IT, power and environmental infrastructure no matter where it is located or how it is connected. Opengear console servers control the widest selection PDU and UPS devices and provide power metering at the managed device level with outlet control. No other vendor logs and alarms on temp readings from such a spectrum of sources in the data center. We do this all in band or out of band while retaining affordability.



Access via Internet

Dial in Out of Band

Automatic Failover



Simple Hotkey function to power cycle from Telnet/SSH session

Centralized Power Management

- 100% Compatible with over one hundred UPS and PDU vendors
- Serial, USB and Network/SNMP for UPS and PDU connectivity
- Simple Web Interface - Logging, Alerting, Monitoring, Real Time Graphing
- Drop in solution - Manage multiple vendor's equipment at existing installs

IT Infrastructure Management -

- Manage servers, switches, routers, firewalls, SAN with serial console ports
- Access blade servers via IPMI or lights out cards over secure management LAN
- Provide network separation and IP address handling for management LAN
- Programmable Linux for easy scripting, perfect for Cloud and Grid computing

Environmental Monitoring

- Manage Environmental Sensors from a single appliance and web console
- Logging, alerts and graphing for disaster recovery and audit trail
- Manage temperature, humidity, door contacts, water, smoke, vibration
- 100% compatible with third party environmental sensors



Supported UPS Systems

Ablerex
ActivePower
AEC
APC
Belkin
Best Power
Centralion
Clary
Cito Power
Compaq
Cyber Power Systems
Deltac
Dynex
Eaton
Effekta
Eltek
Energizer
Energy Sistem
ETA
Ever UPS
Ever-Power
Exide
Fenton Technologies
Fairstone
Fideltronik
Fiskars
Gamatronic
Geek Squad
Gemini
HP
INELT
Inform
Infosec
Ippon
Krauler
Lestar
Liebert
Mastergard
Maxxtro
Mecer
Meta System
MGE UPS
MicroDowell
Microsol
Mustek
Nitram
Onac
Online
OnLite
Opti-UPS
Orvaldi Power
Powercom
PowerGuard
PowerMan
PowerTech
PowerWalker
Powerware
Powerwell
Repotec
SMS Brazil
SOLA/Mexico
Socomex Sicon
Soltec
Soyntec
Square One Power
SuperPower
SVEN
Sweex
Sysgration
Technaware
Tripp-Lite
Trust
Unitek
UPSONIC
Various
Victor/IMV
Viewsonic

Supported PDU Vendors

APC MasterSwitch Plus
Appro
Baytech
Avocent / Cyclades
Dataprobe
LNXI Icebox
Digital Loggers
HP
IBM Blade Center, H8
ICS
Aviosys
Linux Networx ICE Box v2-4.x
Measurement Computing Corp.
MicroEnergetics
Phantom v3, v4
Rose UltraPower
Server Technology
Sun Integrated LOM
WTI NetPowerSeries, RPS
Western Telematic
Systems Phantom

How it works:

The power management in Opengear's console servers is built on Network UPS Tools, an extremely powerful and versatile collection of programs for monitoring and administering UPS hardware. The open source Network UPS Tools project is sponsored by Eaton (PowerWare/MGE) and it now also supports Power Distribution Units (PDU) management, either natively using SNMP or through a binding to Powerman. Opengear's Console Servers also embed the PowerMan programs from Livermore Labs, which control serial and network connected PDUs. Both these trusted open source solutions are extensively deployed in major enterprise data centers around the world.

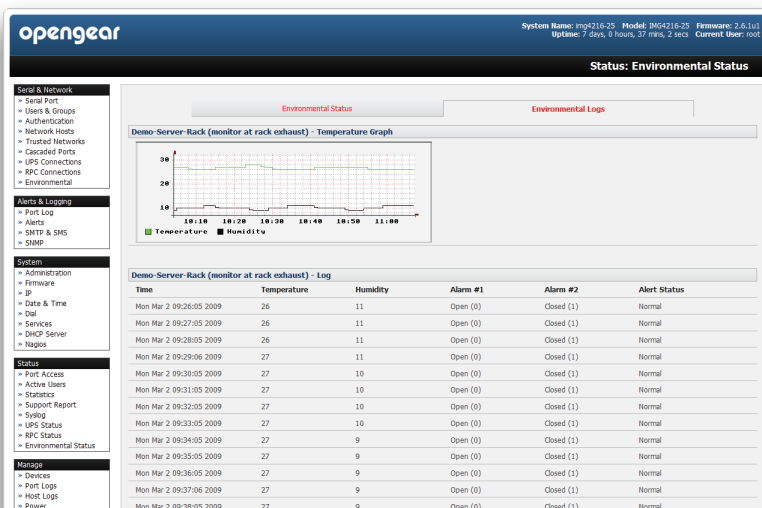


"Knowing I don't have to drive to the datacenter to reboot a machine gives me a warm fuzzy feeling"

Simple Browser or Terminal Interface



Real Time Graphing, Logs and Alerting



opengear Power Management is included with:

CM4100
Console Server

IM4200
Infrastructure Manager

IMG4000
Management Gateway

KCS6000
KVM Console Server