

QUICK START

opengear

IP-PDU 9108



1) Check kit contents

- IP-PDU Power Distribution Unit
- 2x Rack Mount Brackets
- Quick Start Guide and CD
- Input Power Cord

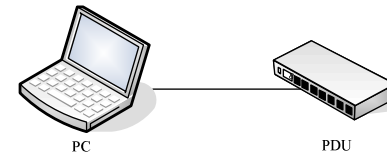
IP-PDU9108-USA



IP-IP-PDU9108-IEC



2) IP connect your IP-PDU to your PC



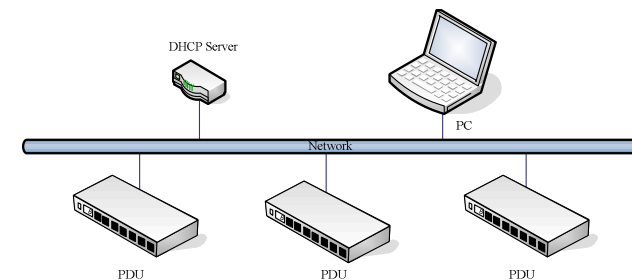
- Install mounting brackets and install the IP-PDU in the rack
- Connect input and output power
- Connect Ethernet cable to the PDU.
- Switch on the PDU
- Press and hold "Function" button. Release button after 2 beeps

- The "Meter" will now display 4 numbers in sequence; this is IP address of the IP-PDU. If the IP-PDU cannot get a new IP address from DHCP server on your Ethernet, then it will stay at default (192.168.0.216)



- Make sure that you PC IP address is in the same subnet with IP-PDU's IP
- Input the IP-PDU IP address in web browser to check IP-PDU information

Note: If you have many IP-PDUs to be connected to local LAN you will need to power on and ensure DHCP is enabled as detailed in the (function Button Description below) and then connect the IP-PDUs to the Ethernet one by one

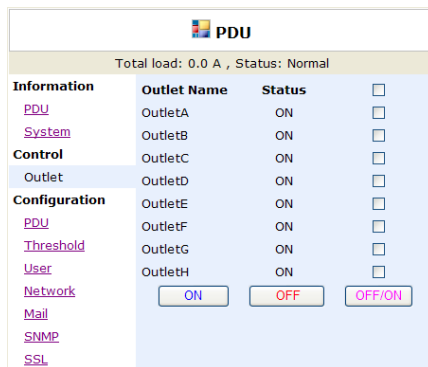


“Function” Button Description

Press and release	Turns off the Alarm warning beeping (which is 1 beep per second). The Alarm overload beeping (3 beeps/ sec) will keep beeping until the current gets back to normal and the current is lower than the threshold to 0.5 amps
Press, hold 1 beep and then release	Meter displays the current information
... 2 beeps	Meter displays 4 numbers in sequence. This is the IP address of IP-PDU
... 4 beeps	Change the way to get IP between DHCP and fixed IP
... 6 beeps	After a long beeping, IP-PDU will be reset back to default setting. Note that IP-PDU power will restart

3) Web interface

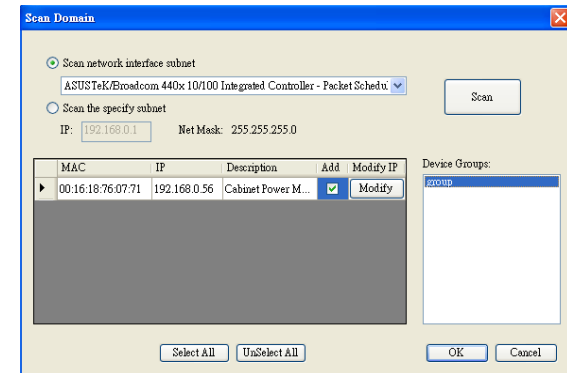
- To login to the PDU IP address from the web browser, enter the default User Name **snmp** and Password is **1234**
- From the web interface you can monitor load current, control outlets, set alerts and thresholds etc (refer User Manual on CD for details)



4) Software Quick Installation

- You may also wish to install the IP-PDU utility software on your CD. To login to the utility, the default ID and password is **admin** and **1234**
- Select the “Scan Subnet” in the pull-down menu of “System Management”
- Select the proper network interface to scan the IP-PDU that installed under this subnet

- Check the “Add” box and click the name in the “Device Group”.



- Check the IP-PDU information in the main window.

WARNING

This equipment has been proven by CE & FCC to be prevented from the influence of harmful electronic jamming in normal business use conditions. Any changes to this equipment without permission may cause damages to your equipment!

- We have no responsibility for possible damage caused by improper usage or abnormal working environment
- Do not use IP IP-PDU in strong vibrating condition
- Please contact the dealer if IP IP-PDU works improperly



Copyright © 2010 All rights reserved. No part of this publication may be reproduced, stored in a retrieval system, or transmitted in any form or by any means, electronic, mechanical, photocopying, recording or otherwise, without the prior written consent of us. All other products mentioned in this document are trademarks of their respective manufactures. We are exempt to notify any change of our products.