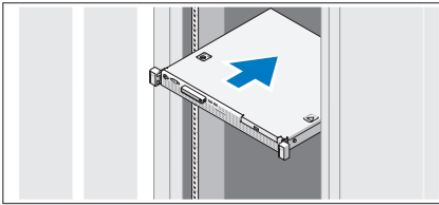


Lighthouse Quick Start Guide

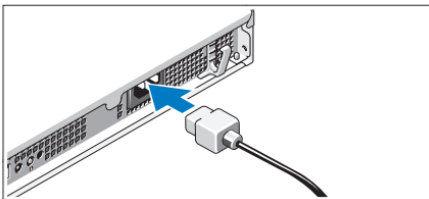
Thank you for purchasing Lighthouse. This Quick Start walks you through both installation and configuration. For more details refer to the *User Manual* on the CDROM.

Step1 Install the Lighthouse appliance

- Unpack your system and verify the parts all appear in good working order
- Assemble the rails and install the system in the rack following the safety instructions and the rack installation instructions provided with your system



- Proceed to connect Lighthouse hardware appliance to the network and to power - as outlined in the included *Dell Getting Started With Your System* document



Step2 Activate Dell service

The Dell hardware on which Lighthouse Standard and Enterprise is built is warranted and serviced by Dell.



It is important to register your system with Dell. This activates your support and without registration you will not receive hardware support

- Browse to <https://www.onlineregister.com/dell/>

Welcome to Dell Product Registration



Please begin registration by answering the questions below.

Asterisks * indicate required fields.

We Value Your Privacy. Dell treats your information in accordance with our [Privacy Policy](#)

* Service Tag:

 [Help](#)

* Location of purchase:



- Enter the service Tag #. This can be found on a label attached to the back on your system:



Step 3 Configure the hardware

Once your Lighthouse has been deployed and the hardware appliance has booted, configuration is performed by browsing to the IP address of the NIC on the Dell hardware.

The Lighthouse NIC has a default static IP address of 192.168.0.1, and your computer must have an IP address in the same network range (192.168.0.xxx). Alternately Lighthouse NIC also has its DHCP client enabled by default, so it will automatically accept any network IP address assigned by any DHCP server on your network – and will then respond at both 192.168.0.1 and its DHCP address.

You will be presented with the login screen on your browser

- Login using the default system user name, *root*, and the password, *default*
- You will then arrive at the *Welcome to the Opengear Lighthouse* screen

opengear System Name: vcms Model: VCMS Firmware: 4.0.0
Uptime: 11 days, 10 hours, 40 mins, 36 secs Current User: root Backup Log Out

Opengear Management Console: Welcome

Monitor	Welcome to the Opengear Lighthouse VM!
Reports	You will need to configure the following in order to have a usable unit. After completing a step by following the appropriate link you can return to the updated configuration steps by clicking on the logo in the top left corner.
System	
Configure	<ul style="list-style-type: none">• Change the default administration password on the User Authorization page. Done.• Configure the local network settings on the Network Settings page. Done.• Configure console servers to be managed on the Managed console Servers page. Done.• Authorize automatically added users on the User Authorization page. Done.

Note: Your computer must have an IP address in the same network range as the Lighthouse.

Step 4 Software configuration

The *Welcome to the Opengear Lighthouse* screen has a menu of initial configuration steps to follow. Complete each step. You can return to the updated configuration steps by clicking on the Opengear logo in the top left corner.

- Enter new passwords using the **Configure: User Authorization** and **Configure: System Administration** menus
- Configure the local network settings using the **Configure: Network Settings** menu
- Configure console servers to be managed using the **Configure: Managed Console Servers** menu. This menu lists all the console servers currently being monitored. The *Detected Managed Console Servers* drop down list also shows all the detected console servers not currently being monitored.

System Name: vcms Model: VCMS Firmware: 4.0.0
Uptime: 8 days, 11 hours, 56 mins, 57 secs Current User: root Backup Log Out

Configure: Managed Console Servers

Managed Console Servers				
	Name	IP Address/DNS Name	Description	Managed Devices Last Retrieved
<input type="checkbox"/>	sd4001	Port 61637 (localhost:61637 → 76.118.187.59)	sd4001	Fri Jan 25 14:11:29 2013 <input type="button" value="Edit"/>
<input type="checkbox"/>	ACM5004gatt	Port 50405 (localhost:50405 → not connected)	ATT	Tue Nov 13 20:01:18 2012 <input type="button" value="Edit"/>
<input type="checkbox"/> Select/unselect all nodes				
<input type="button" value="Retrieve Managed Devices"/> <input type="button" value="Delete"/>				

Detected Console Servers

Local Console Servers No local console servers detected.

- Authorize automatically added users using **Configure: User Authorization** menu

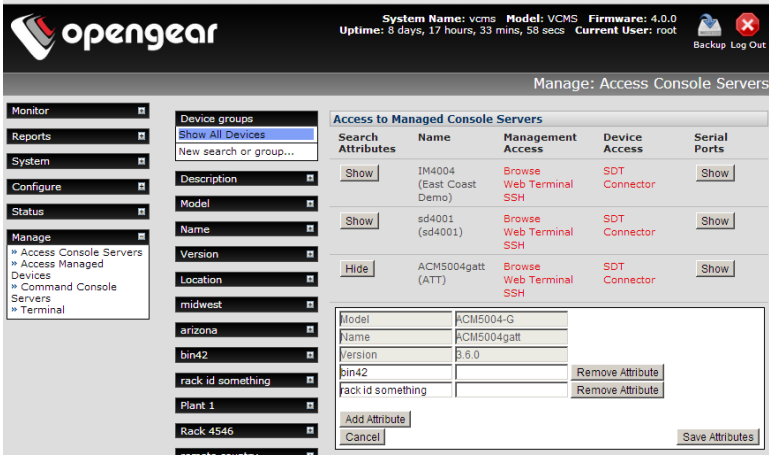
Step 5 Final configuration steps

- It is recommended that you set the local Date and Time as logging entries are time-stamped (and certificate generation needs to check the validity period). Select **Configure: Date & Time** and set manually or select synchronizing with a remote time server using NTP
- The default SSL certificate that comes with Lighthouse is for initial set up purpose and should not be relied on for secured global access. Select **System: SSL Certificate**, fill out the fields and click on **Generate CSR**. Then **Download** the CSR string and send it to a Certification Authority (CA) for certification. They will return you a new certificate which you can then **Upload**

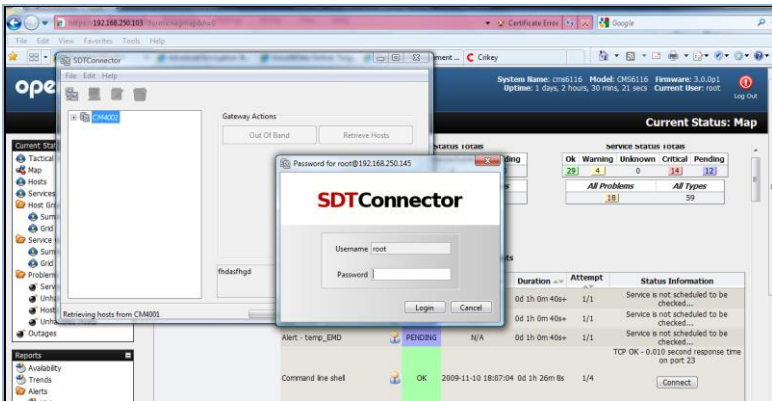
Step 6 Commence monitoring

You Lighthouse provides search and filter-by-attribute tools for accessing and managing groups of your *Managed Console Servers* (**Manage: Access Console Server**). It also provides a simple path for monitoring attached *Managed Devices* (and serial ports) using a single sign-on (**Manage: Access Managed Devices**).

And there's a selection of paths you can use for access including browser, web terminal, SSH and SDT proxy connection facilities.



Your Lighthouse also runs Nagios (www.nagios.org). **Current Status, Reports and System** menu show the status and history of the applications, computers and devices in your distributed networks. To remedy identified problems simply click on the **Connect** or **Manage Power** or **View Status/Logs** button. Your browser will download a configured *SDT Connector* Java applet from the Lighthouse which will run on your computer and securely connect you to the relevant screen on the *Managed Device* or *Managed Console Server*.



Please register your product to activate the warranty and to automatically receive advice of future firmware updates. Go to: <http://opengear.com/product-registration.html>