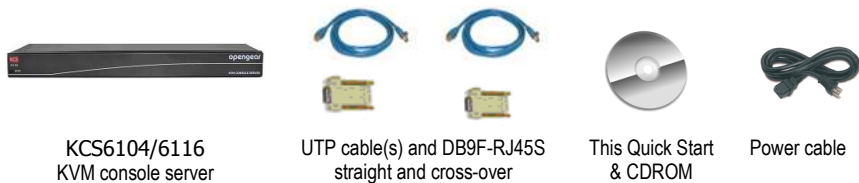


# KCS6104 & KCS6116 Quick Start Guide

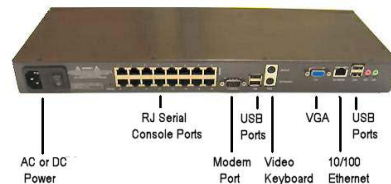
Thank you for purchasing the KCS6104/6116 KVM console server. This Quick Start walks you through installation, configuration and local operation. For more details please refer to the *User Manual* on the CDROM.

## Step 1 Check kit contents



## Step 2 Connect the hardware

- Plug the KVM console server into the AC mains
- Attach any SERIAL and USB devices
- Attach the NETWORK port to your management network
- Attach VGA, KEYBOARD and MOUSE to an LCD drawer, KVM switch or screen, keyboard and mouse

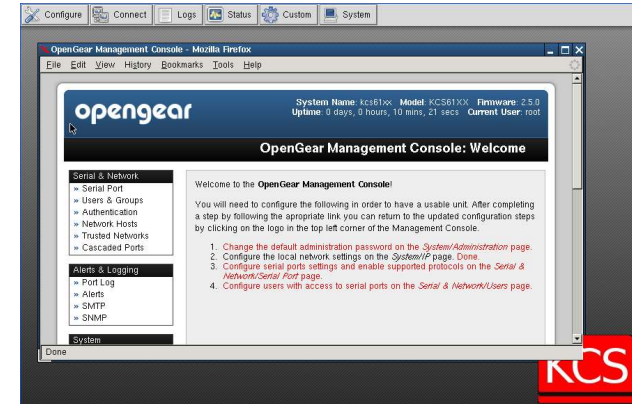


**Note:** If you plan to use out-of-band (OoB) dial-in access, connect the CONSOLE serial port to an external modem

## Step 3 Set up the console server

- Power on the KCS6104/6116
- Using the attached screen and keyboard, login with the default system user name *root* and default system password *default*

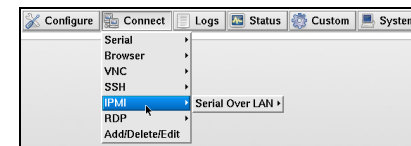
- Click **Configure** to launch the Management Console, login using the default system user name and password of *root default*
- From the Management Console, select **System: Administration**, enter and confirm a new **System Password** and click **Apply**



- Go to **System: Administration** on the *Management Console* then enter and confirm a new **System Password** and click **Apply**
- From the Management Console, select **System: IP**
  - To assign your KCS6104/6116 a static IP address, check **Static** and enter the **IP Address** and the **Subnet Mask** for your management LAN – leave **Gateway** and **DNS** fields blank
  - If you wish to use a DHCP server to assign network settings to the KCS6104/6116, check **DHCP**

## Step 4 Configure thin client connections

The KCS6104/6116 can function as a thin client, running local client software to connect to serial devices and network hosts.

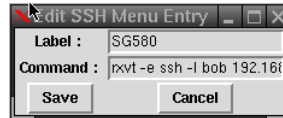


To add a connection to a network host:

- From the Control Panel, select **Connect: Add/Delete/Edit**
- Select the client protocol from the left hand column and click **Add**
- Enter connection details network host (e.g. **Hostname**, **Username**) and a **Label**, then click **Add**

Once all hosts have been added, click **Save**.

- Once a host has been added you may tailor the command executed to connect to it, by selecting **Connect: Add/Delete/Edit** and clicking **Edit**

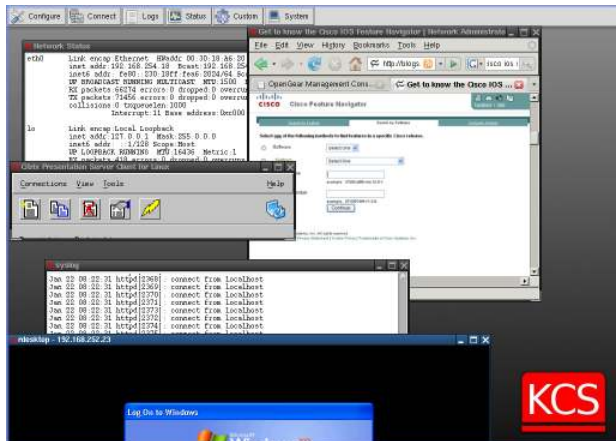


You can now launch the connection from the **Connect** menu.

The KCS6104's four or KCS6116's sixteen serial ports are pre-configured with RS232 settings of 9600 baud, no parity, 8 data bits and 1 stop bit. If you wish to change these settings:

- Click **Configure** to load the Management Console, select **Serial & Network: Serial Port** and click **Edit** for the relevant **Port #**
- Set the **Common Settings (Baud Rate, Parity, Data Bits, Stop Bits and Flow Control)** to match those of the device being controlled.
- You can also select the **Console Server** protocols (**Telnet, SSH, TCP, Unauthenticated Telnet or RFC2217**) for the remote networks connection to this serial port – a **Logging Level** may also be set to specify the level of information to be logged for this port
- Click **Apply**

You can now access the KCS6104/KCS6116 locally with the attached screen and keyboard and use the local thin client software to manage all the computer, networking and power devices in the rack.



## Step 5 Remote control

There are two options to remotely manage network hosts and serial devices via the KCS6104/6116.

The first is to run the thin client management software on the KCS6104/6116, connecting directly to the network host or serial device – then use VNC from a remote PC to remotely control the KCS6104/6116.

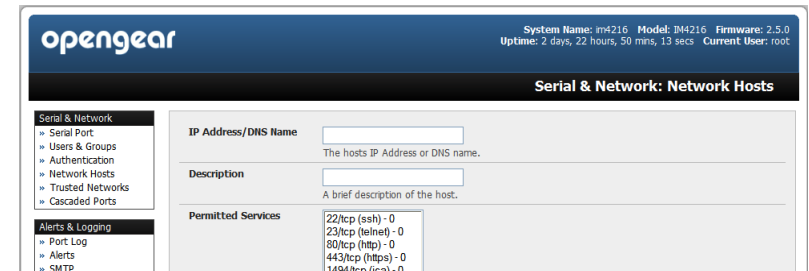
- From the Management Console, select **System: Services**, check **VNC Server** and/or **Secure VNC Server**

- Click **Apply**
- On the remote PC, launch a web browser and login to the KCS6104/6116 Management Console (in the address bar, enter **https://** followed by the IP address of the KCS6104/6116, e.g. **https://192.168.0.1**)
- Select **Manage: KCS: Connect** and launch the Remote Control connection, your browser will download and run a VNC client Java applet

The second option is to run the client management software on the remote PC, and securely tunnel the connection to the network host or serial device through the KCS6104/6116.

This is particularly useful when you have proprietary applications on the remote PC (such as Dell Open Manage or VMware VDI client) that you want to use to manage a DRAC service processor or VMware virtual device on one of your servers:

- Select **Serial & Network: Network Hosts** and click **Add Host**



- Enter the **IP address/DNS Name** of the host
- Edit the **Permitted Services** used for accessing this host, e.g. HTTPS (TCP port 443), VNC (TCP port 5900), or add custom TCP or UDP port numbers – only the services specified here are tunneled through to the host, all other services are blocked
- At this stage you may also specify the level of information to be logged and monitored for each host access
- Click **Apply**
- Select **Serial & Network: Users & Groups** and click **Add User**
- Enter a **Username**, enter and confirm a **Password** and select the newly added host under **Accessible Host(s)**
- Click **Apply**
- Install the **SDT Connector** Java application on the remote PC, click **File: New Gateway**
- Enter the KCS6104/6116's IP address as the **Gateway Address** and the newly added username and password as **Gateway Username** and **Gateway Password**, click **OK**
- Click **Retrieve Hosts** to retrieve the user's accessible hosts and permitted services from the KCS6104/6116
- Under the KCS6104/6116 **Gateway**, select at the host access the service to launch – a tunneled connection through the KCS6104/6116 is established and the local management client software is launched