

# IM4208, IM4216, IM4232 & IM4248

## Quick Start Guide

Thank you for purchasing the IM4208/16/32/48-2 console server. This Quick Start walks you through installation, configuration and local operation. For more details please refer to the *User Manual* on the CDROM.

### Step1 Check kit contents



IM4208/16/32/48-2  
infrastructure manager



UTP cables (2) and DB9F-RJ45S  
straight and cross-over



Quick Start &  
CDROM



Power cables (2)  
(-DAC models only)

### Step 2 Connect the hardware

- Power the console server. The -DAC models have dual universal AC power supplies (with automatic failover) built in, that plug into the mains. The -DDC models have dual DC supplies (with auto failover) and external screw connector blocks for connecting to the DC power sources
- Connect the *NETWORK1* port on the console server to your network, connect your serial devices to the console server *SERIAL* ports 1-8/16/32/48

---

**Note:** If you plan to use out-of-band (OoB) dial-in access, connect the internal modem to the phone line. If you plan to use broadband OoB, connect the access device (such as DSL modem) to *NETWORK2*. If you plan to use an external cellular modem for OoB access, refer to the User Manual or the IM4200-X-G/GU/GV Addendum.

---

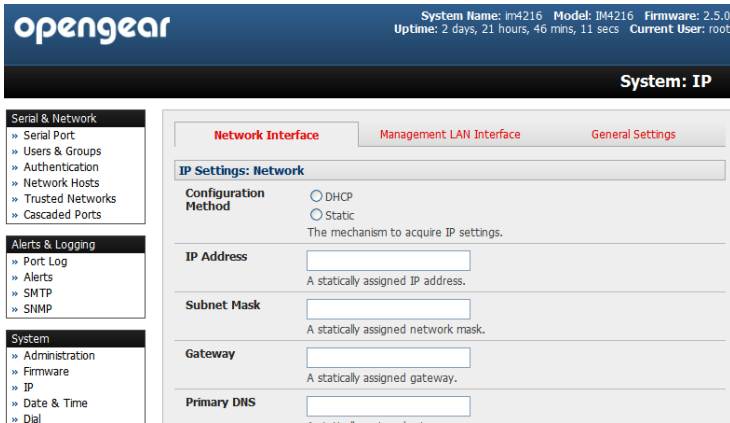
### Step 3 Set up the console server

The default console server IP address is *192.168.0.1* (subnet mask *255.255.255.0*). With a web browser on any computer that is LAN connected to the console server:

- Enter **https://192.168.0.1** into the address bar
- Log in using the default system user name *root* and the default password *default*, a **Welcome** screen listing the basic configuration steps is displayed

**Note:** The computer must have an IP address in the same network range (192.168.0.xxx) as the console server. Alternately, you can use the *ARP Ping* command to set the IP address (refer *User Manual* or online FAQ for details). The console server also DHCP client enabled by default. It will automatically accept any network IP address assigned by any DHCP server on your network – and will then respond at both 192.168.0.1 and its DHCP address.

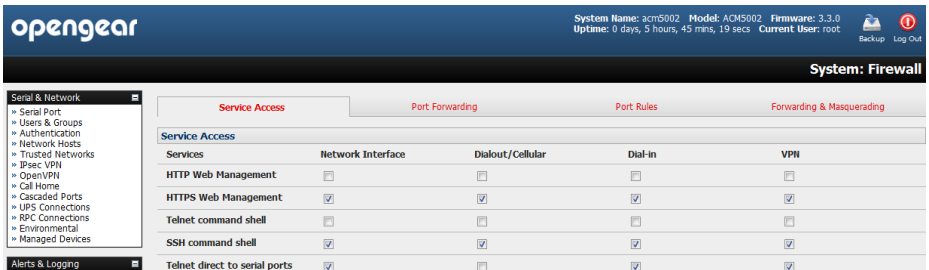
- Select **System: Administration**. Enter and confirm a new **System Password** and click **Apply**
- Select **System: IP** then **Network Interface** and check **DHCP** or **Static** for **Configuration Method**



The second Ethernet network port (*NETWORK2*) is inactive by default. It can be set up for failover/OoB access (refer *User Manual*) or as a management gateway/LAN:

- Select **Management LAN Interface** and uncheck **Disable**
- Enter the **IP Address** and **Subnet Mask** for this segment of the Management LAN (leaving **Gateway** and **DNS** fields blank). Refer to the *User Manual* if you wish to enable the DHCP server or change default firewall/router setting on either LAN port

**Note:** The console server's firewall determines which protocols/ services can be used to access which ports/ devices. Please refer to the *User Manual* and FAQs before changing any of the default services or access settings. By default only HTTPS and SSH access is enabled to the console server itself. But you can use **Service Access** menu on **System: Firewall** to change settings for the console server itself (and for connected serial ports). Similarly using the **Forwarding & Network** menu you can permit remote IP access (e.g. over cellular) to devices on Network or Management LAN.



## Step 4 Configure serial, network & USB devices

- Select **Serial & Network: Serial Port** to display the labels, modes and protocol options currently set for each serial port – by default all serial ports are set in Console Server mode (refer the *User Manual* if other modes are required). To configure a serial port, click **Edit**:
  - Configure the **Common Settings** (Baud Rate, Parity, Data Bits, Stop Bits and Flow Control) to match those of the device being controlled
  - Select the **Console Server** protocols (Telnet, SSH, TCP and RFC2217) that are to be used for the data connection to that port
  - A **Logging Level** may also be set to specify the level of information to be logged and monitored for each that port
  - Click **Apply**
- To enable access through the console server to a locally networked device (referred to as a *host*), select **Serial & Network: Network Hosts** and click **Add Host**:
  - Enter the **IP address/DNS Name** of the host
  - Edit the **Permitted Services** used for accessing this host, e.g. HTTPS (TCP port 443), VNC (TCP port 5900), or add custom TCP or UDP port numbers – only the services specified here are tunneled through to the host, all other services are blocked
  - At this stage you may also specify the level of information to be logged and monitored for each host access. Click **Apply**
- Your IM42xx-2-Xx console server has one USB1.1 port (on the front face) and two USB 2.0 ports (at the rear). Attached USB devices are auto-configured
  - The console server has an internal 16GB flash drive for log file storage. However the USB1.1 port can be used with an external USB flash for loading updated firmware or config files
  - The USB2.0 ports can also be used for connecting to USB console ports on UPS supplies or attaching cellular USB modems

## Step 5 Add new users

**Note:** It is recommended that you set up a new Administrator user (in the *admin* group with full access privileges) and login as this new user for all ongoing administration functions (rather than continuing as *root*).

---

- For each new user, select **Serial & Network: Users & Groups** and click **Add User**
- Enter a **Username** and enter and confirm a **Password**, and nominate the **Accessible Hosts** and **Accessible Ports** the user is allowed to access
- To grant limited access to the Management Console, check the *user* **Group**, to grant full access to the Management Console, check the *admin* **Group** – by default the user is granted no Management Console access. Click **Apply**

opengear System Name: acm5003-m Model: ACM5003-M Firmware: 3.3.2  
 Uptime: 0 days, 0 hours, 21 mins, 56 secs Current User: root Backup Log Out

**Serial & Network: Users & Groups**

**Serial & Network**

- Serial Port
- Users & Groups
- Authentication
- Network Hosts
- Trusted Networks
- IPsec VPN
- OpenVPN
- Call Home
- Cascaded Ports
- UPS Connections
- RPC Connections
- Environmental
- Managed Devices

**Alerts & Logging**

- Port Log
- Alerts
- SMTP & SMS
- SNMP

**System**

- Administration

**Add a New user**

Username:  A unique name for the user.

Description:  A brief description of the user's role.

Groups:
 

- admin (Provides users with unlimited configuration and management privileges)
- users (Provides users with basic management privileges)

 A group with predefined privileges the user will belong to.

Password:  The users authentication secret. Note: A password may not be required if remote authentication is being used.

Confirm:  Re-enter the users password for confirmation.

## Step 6 Advanced configurations

The console server offers many more advanced functions including:

- ❖ The **Alerts & Logging: Alerts** facility monitors serial ports, hosts, user logins, UPSes (Uninterruptible Power Supplies), RPCs (Remote Power Controllers, such as PDUs and IPMI devices) and EMDs (Environmental Monitoring Devices). A broad selection of trigger events (such data patterns, temperature or battery levels) can be specified. When triggered, a warning email, SMS, Nagios or SNMP alert is sent to a nominated destination.
- ❖ Extensive management of UPSes and RPCs using open source *NUT* and *Powerman* tools. The **Manage: Power** facility enables both administrators and regular users to monitor and control attached PDU power strips, and servers with embedded IPMI BMCs.
- ❖ Connecting EMDs to any serial port (with an adapter) and remotely monitor the temperature, humidity, physical access, smoke alarms, etc. Details are provided in the *EMD5000 Quick Start* supplied with the EMD.
- ❖ Historical logs of all communications with serial and network attached devices, system activity, UPS and PDU power status, environmental status, etc. **Alerts & Logging: Port Log** allows this history to be saved locally or remotely. Logs can be viewed from the **Status** and **Manage** menus.
- ❖ Other advanced features, such as *Serial Port Cascading*, remote *Authentication*, *Trusted Networks*, *Secure Tunneling*, *Nagios Distributed Monitoring*, the *Command Line* interface – these are covered in detail in the *User Manual* on the CDROM.

---

**Note:** On the CDROM you will find the *PortShare* and *SDT Connector* software tools. *SDT Connector* provides you with secure, point and click access to the console server and all the attached devices. *PortShare* connects the COM/tty port applications on your Windows PC, Linux server or virtual machine to the serial devices attached to the console server. **Refer to the provided Quick Starts for details**

---



**Please register your product** to activate the warranty and to automatically receive advice of future firmware updates. Go to: <http://opengear.com/product-registration.html>